

**MICRO SWITCH**  
a Honeywell Division

FED. MFG. CODE 91929

MINIATURE PRECISION  
LIMIT SWITCH

CATALOG LISTING  
**914CE3-6**

914CE3-6

**M**

DRAWING  
NUMBER

ISSUE  
**4**

REPLACES

RELEASE NO. PR-5624

CHECK

REVISIONS

A CO-69061  
S A V  
3 OCT 91

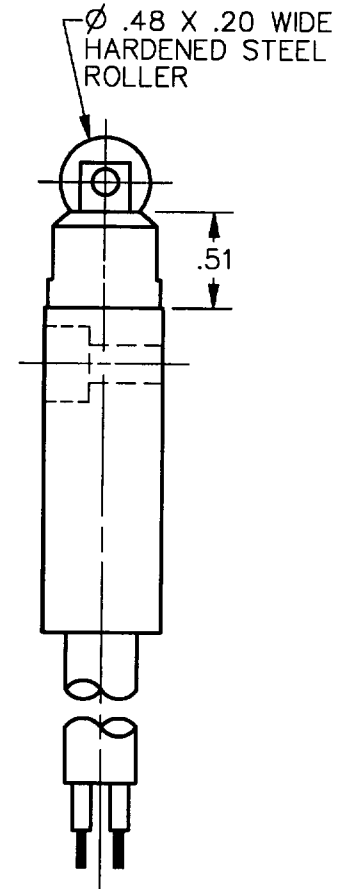
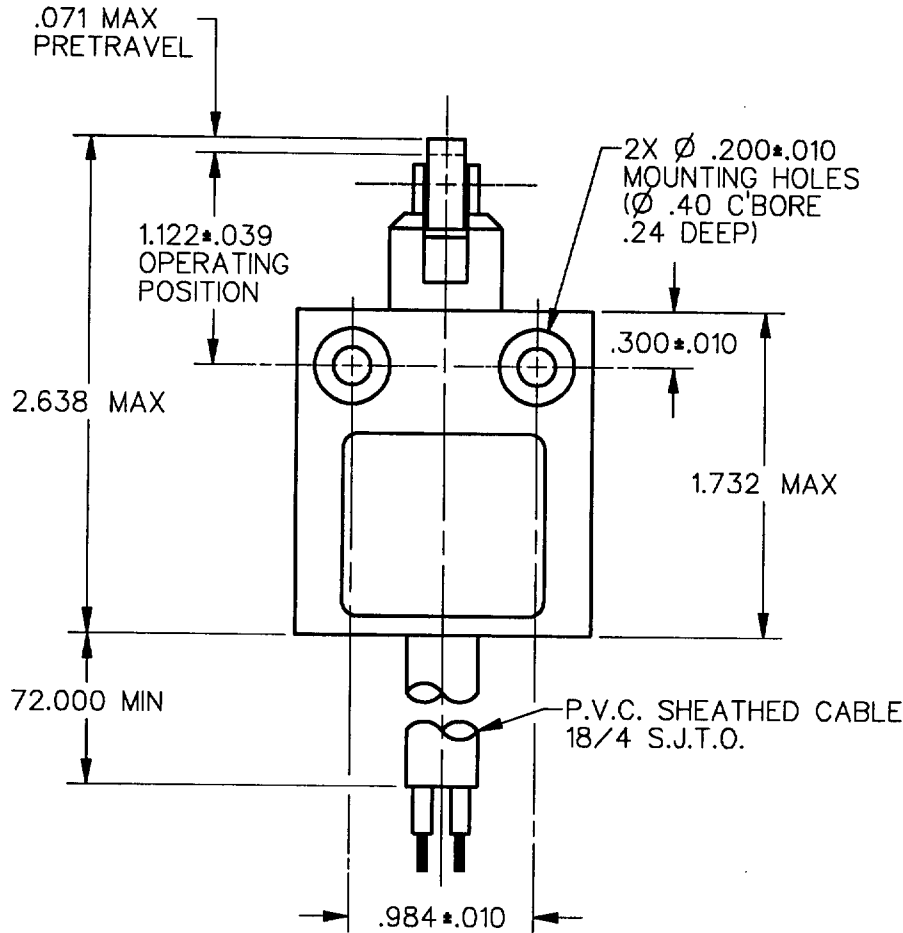
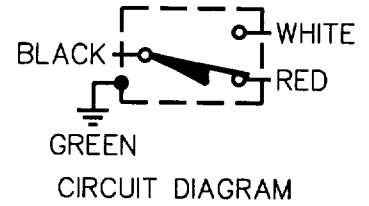
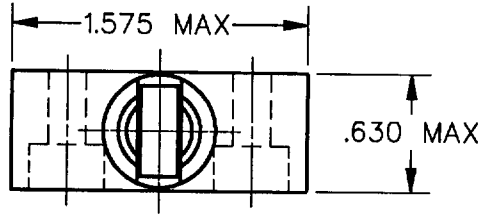
CHECK

13 NOV 91

DDM/CAD

DRAWN

S A V 3 OCT 91

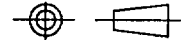


NOTES  
1 - ZINC HOUSING FINISHED WITH GRAY PAINT

ANSI Y14.5M-1982 APPLIES

THIS DRAWING COVERS A PROPRIETARY ITEM AND IS THE PROPERTY OF MICRO SWITCH, A DIVISION OF HONEYWELL. THIS DRAWING IS NOT TO BE COPIED OR USED WITHOUT THE APPROVAL OF MICRO SWITCH.

THIRD ANGLE PROJECTION



CHARACTERISTICS	
OPERATING FORCE	2.7 LB MAX
RELEASE FORCE	1.0 LB MIN
DIFFERENTIAL TRAVEL	.004 MAX
OVERTRAVEL	.118 MIN

ELECTRICAL DATA

CONTACT ARRANGEMENT  
S P D T

5A - 250 VAC  
1/10HP - 125 OR 250 VAC



SCALE	FULL	DO NOT SCALE PRINT
<b>UNLESS OTHERWISE SPECIFIED TOLERANCES ARE</b>		
ONE PLACE	(.0)	±.030
TWO PLACE	(.00)	±.015
THREE PLACE	(.000)	±.005
ANGLES		±
WEIGHT		